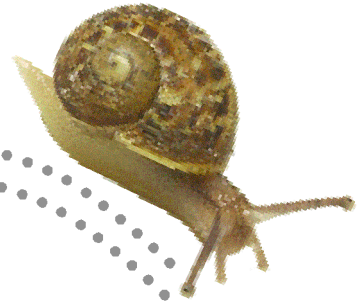


Snail Search



Get out in your garden to help scientists find 'alien'snails!



Take part in this fun but important UK study to find out more about your environment.

Anyone can take part!

The harmless 'alien' snail is not from outer space. Scientists call it an 'alien' because it has not always lived in Britain. It's commonly found in countries like Spain and Italy. It was first spotted in Britain, in Devon in 1950.

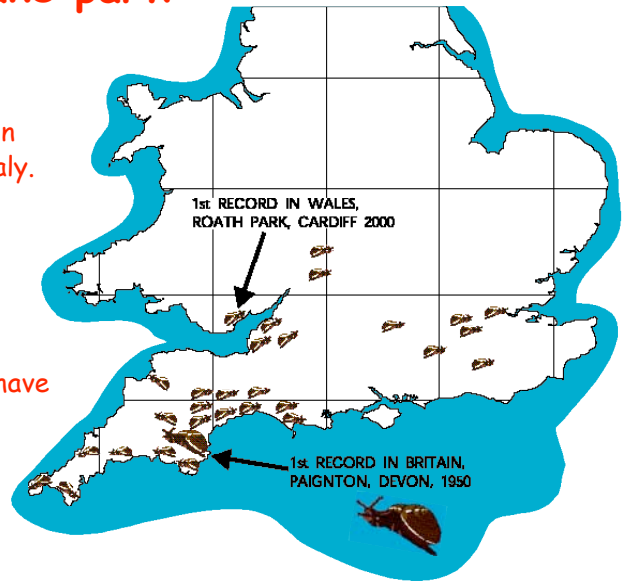
How did it get here?

It may have sailed to Britain, accidentally tucked in amongst some garden plants! But nobody really knows. We hope to find out what effects changing temperatures have on the mini-beasts in our gardens.





See where the alien has got to so far!

Visit our snail map at:

www.museumwales.ac.uk/scan



Take Part!

-  Use this snail guide to go searching for snails.
-  Note what you found on the form below.
-  Visit our website to let us know what you found
www.museumwales.ac.uk/scan
-  We will reward you with a Super Scientist Certificate!



Number found

Common Snail

Banded Snail

Glass snail

Strawberry snail

'Alien' Snail

Name:

Address:

Post code:

Grid reference: (if known)

e-mail:



Start here

No

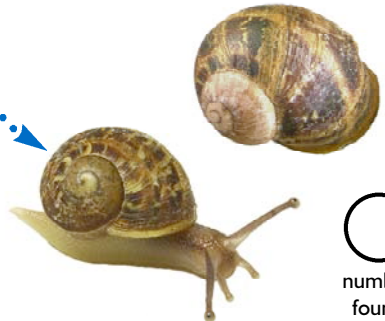
Look at the shell. Is it smaller than a 5 pence piece?



Yes

Look at the pattern on the shell. Does it look like this?

Yes



Common Snail
Helix aspersa
Colours: Brown, grey and yellow.

number found

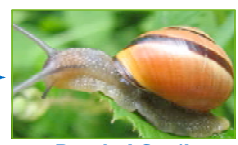
No

Look at the pattern on the shell. Does it have stripes like these?



One stripe Lots of stripes Or even no stripes like this

Yes

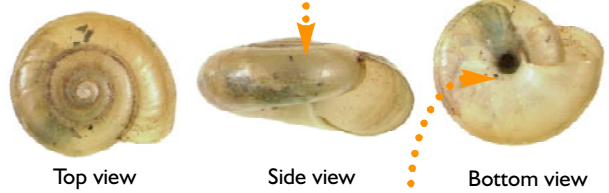


Banded Snail
Cepaea species
Colours: Yellow, orange brown or pink.

number found

Yes

Look at the shell. Is it very shiny like this?



Glass Snail
Oxychilus species
Colours: yellow, grey, strawberry or brown.

number found

Has a hole like a belly button

No

Look at the bottom of the shell. Does it have a hole like a belly button?



Strawberry Snail
Trichia striolata
Colours: yellow, grey, strawberry or brown.

number found

No

Look at the side view of your shell. Is it pointed like this?



Colours: brown, orange, grey and sometimes spotted.



'Alien' Snail
Hygromia cinctella

number found

No belly button like hole



Snail Search

Search carefully!
Snails can hide under leaves, logs and other dark damp places...



Go back to Start

Check your snail carefully!
If your snail does not match the glass, strawberry or 'alien' snail, you may have a baby 'common' or 'banded' snail

More copies and resources available from:
www.museumwales.ac.uk/scan
(029) 2057 3304
scan@museumwales.ac.uk

Printed on recycled paper

- If you find an 'alien'!**
- 1) Look for an empty shell then wrap it in tissue and place inside a small margarine tub.
 - 2) Note what you found on the front of this sheet.
 - 3) Place all in an envelope marked 'Handle with Care'
 - 4) Send to: Snail Search
Learning
National Museum & Gallery Cardiff
Cathays Park
Cardiff CF10 3NP